



# Bluetooth Chatting Application A Mobile Application



Which allows two parties within a Bluetooth radius to chat and send files using Bluetooth.

## CoCIS Connect from Invention To Innovation

General Overview

System Architecture

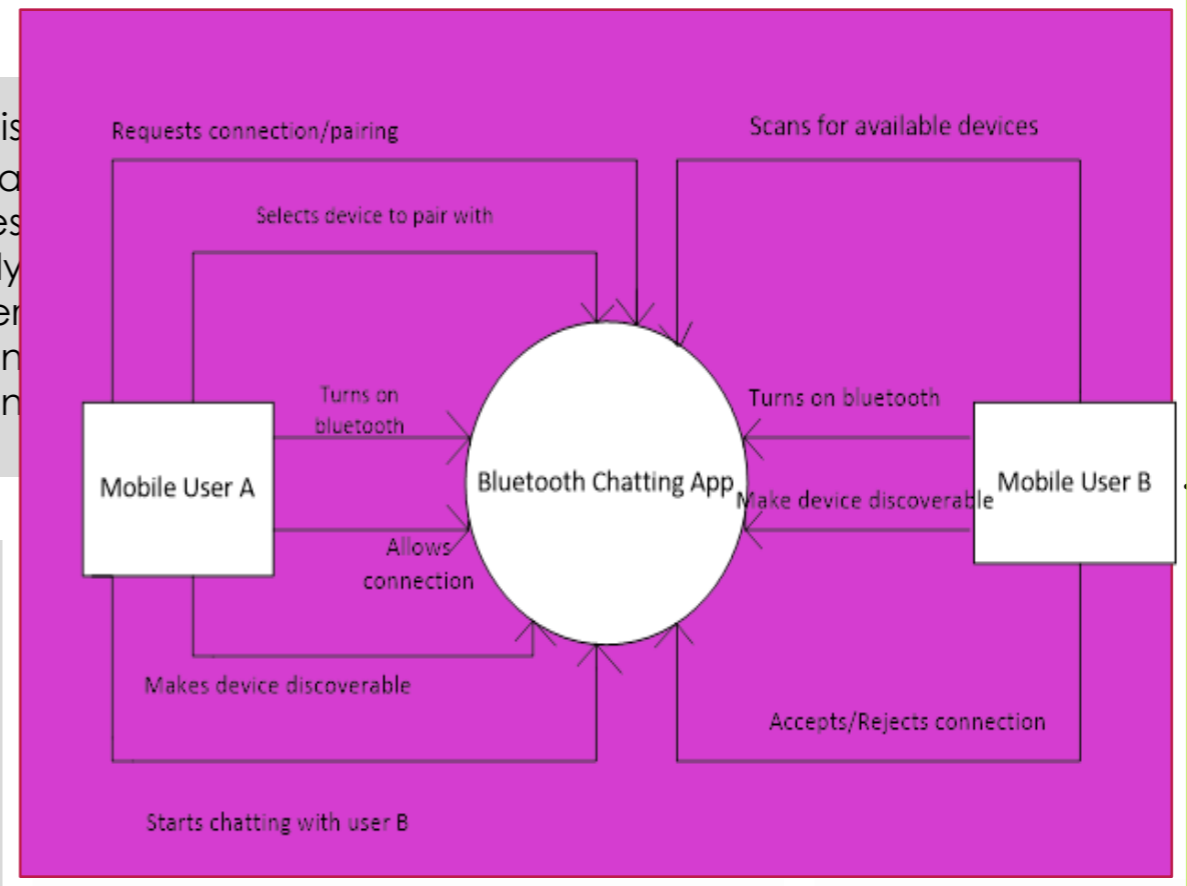
Chatting applications are increasingly becoming essential in today's world as different organizations and individual users continue to embrace them due to the benefits they come along with. Such organizations include Banks, Government Bodies, Health Centers and Educational Institutions. This mobile application will run on mobile devices due their increased use in Uganda especially smart phones. it has been observed that in Uganda where the end users are relying on telecommunications to buy data bundles on a daily basis in order to connect with the increasingly changing World through chatting and delivering information to one another.

### The Problem Statement

The problem this project addresses is redundancy usage of Internet/data bundles that are in some cases unnecessary for a user that needs only chatting at a time and the ability to transfer information (chatting) by a mobile user in cases of slow or no data connection in some locations.

### Benefits to potential users

- ❖ Enables multiple users to chat via Bluetooth without data bundles.
- ❖ Availability of the application thus easing accessibility.
- ❖ The system ensures security where only paired device mobile users are allowed to communicate with one another.
- ❖ Usability can be done by any Bluetooth enabled device.
- ❖ It favors mobile users in poor networks so long as their devices have Bluetooth technology



### Project Team Details

Makerere University  
Kampala  
College of Computin & Information Sciences  
Department of Computer Science.

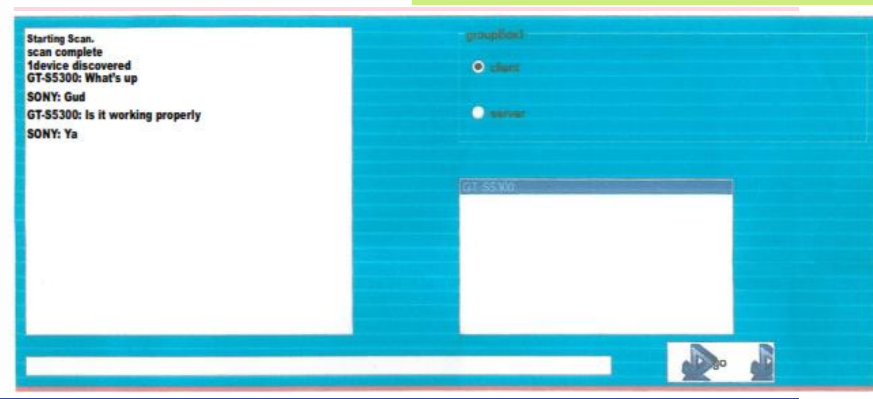
### Project Members

- Ssali Eddie 0702556327
- Mukasa Joshua 0779909523
- Kaudha Rose 0713548414
- Sanya Felix 0702456778
- Supervisor**  
Ms. Marriette Katarahweire  
kmarriette@cit.mak.ac.ug

### Application Functionality

- ❖ Bluetooth is switched on and scans for available devices.
- ❖ Pairs with discoverable devices and a connection is secured.
- ❖ Starts chatting and sharing of files, pictures etc.
- ❖ The application can only be accessed with mobile users that are in Bluetooth range

### Chatting progressing between User A and User B



### Application scanning to find any connected devices

